

Empowering Cities to Control and Optimize Multi-Mode Traffic Flow

A Coalition

May 9, 2024



SCAN ME

Booth 103 for Live Demo

Scan for slides



Paul Hoekstra
Business Unit Director
TNL Mobility, USA

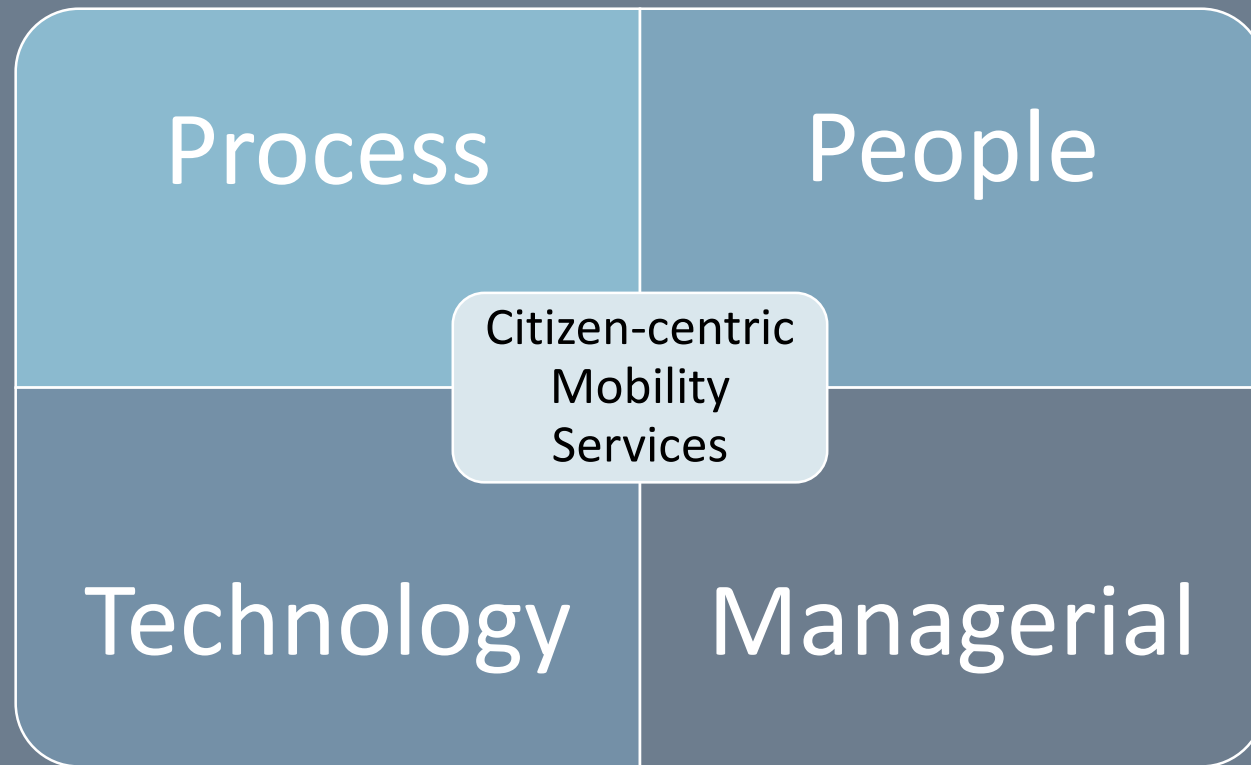


1. I think we are doing well with the transit and transportation in our cities
2. Overall, I am fairly satisfied and see the most value in smaller, targeted projects
3. I am very dissatisfied with how US cities serve citizens, visitors, and businesses with Transit and Transportation



3. I am very dissatisfied with how US cities serve citizens, visitors, and businesses with Transit and Transportation

Service Components

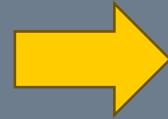
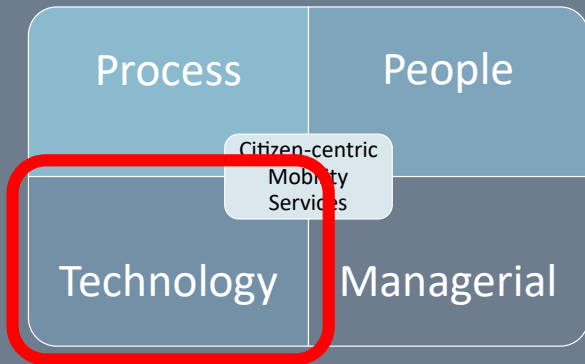




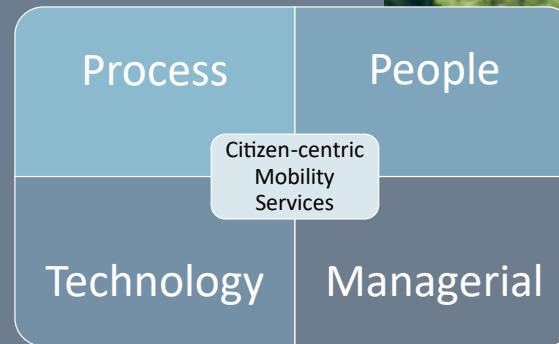
Schedule and Headway adherence are key drivers of customer satisfaction

Transit Agencies are highly dependent on Transportation Agencies

Transportation Agency

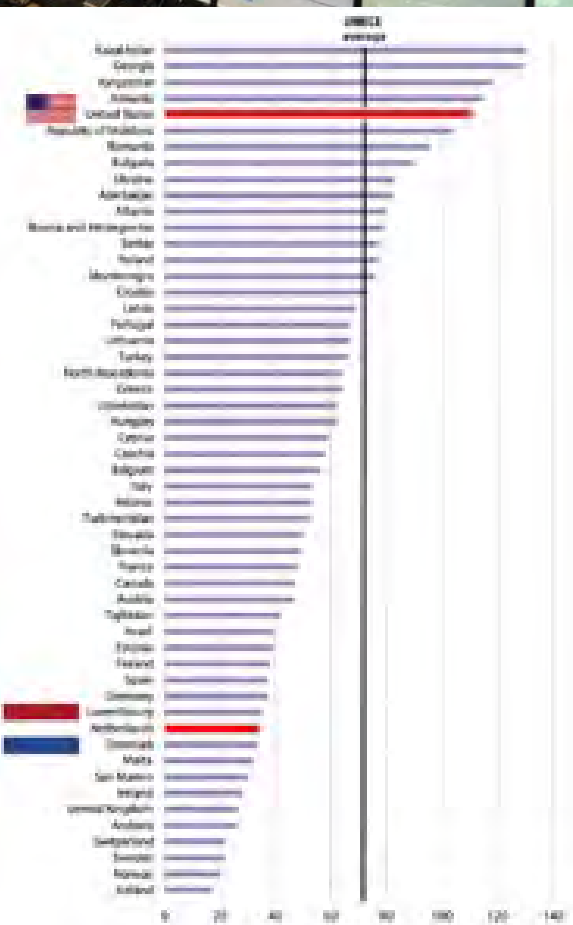


Transit Agency



Dutch Traffic Engineers have significantly better tooling

Road traffic fatalities per million inhabitants by country, 2019 – United Nations Economic Commission For Europe



Visit to The Netherlands, 2023

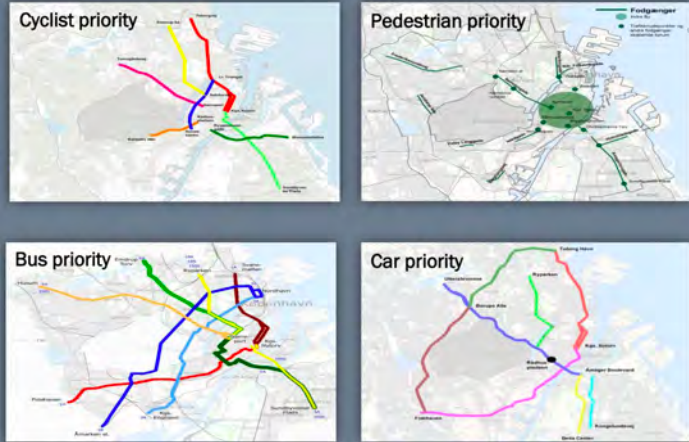
Numbeo Quality of Life Index

Index	United States	Netherlands
Traffic Index:	157.07	84.04
Time Index (in minutes):	33.90	23.54
Time Exp. Index:	414.36	23.54
Inefficiency Index:	260.82	137.50
CO ₂ Emission Index:	7,510.71	1,928.70

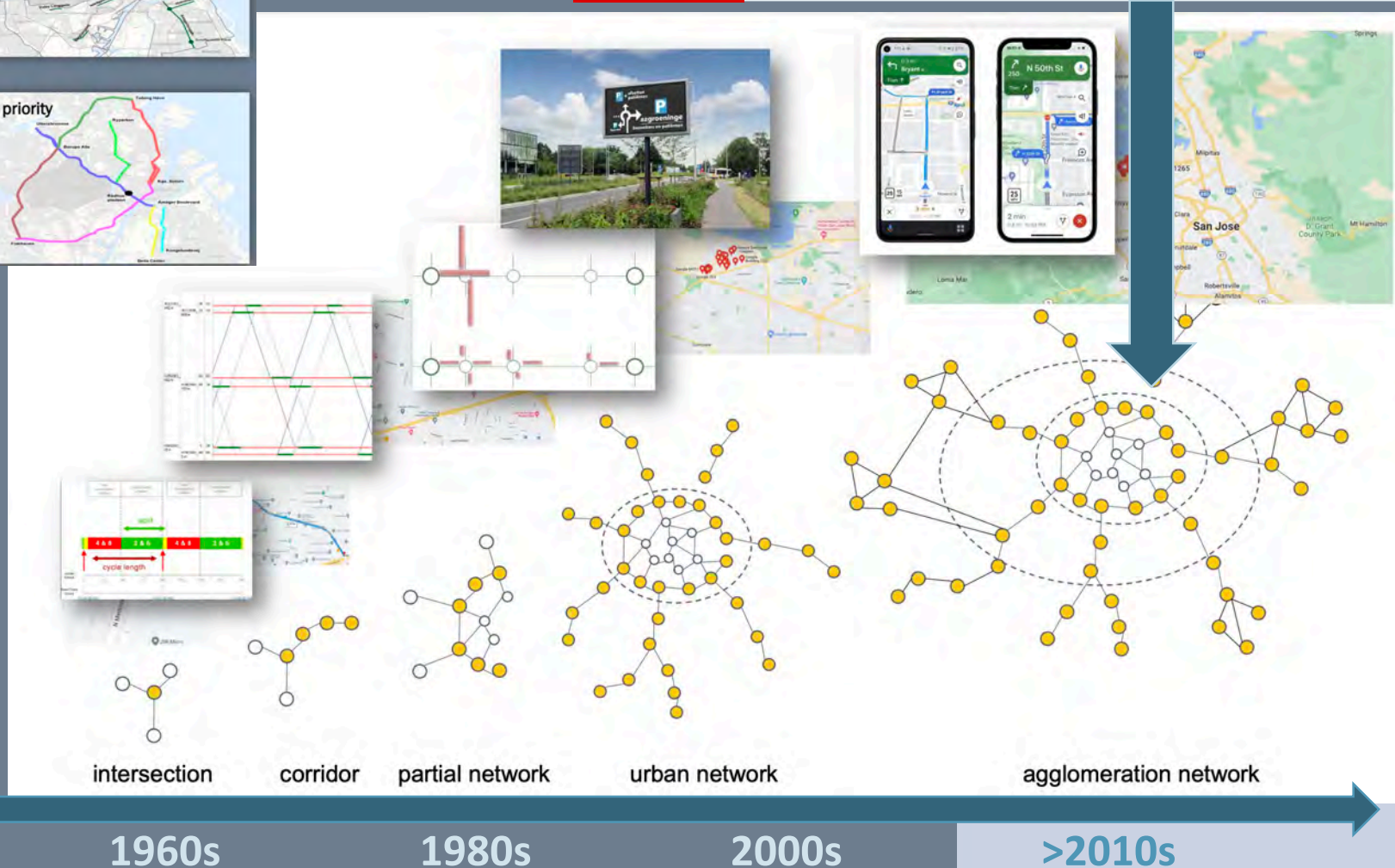


“The system is flexible to allow prioritization whatever the senior managers decide is important for their community”
 Vincent Lau, Amsterdam City Sr. Transportation Engineer

It took over 50 years for the Dutch to become world-class



Why not just start here?





Integrated Tooling to Deliver Dynamic Multi-Mode Traffic Flow Optimization

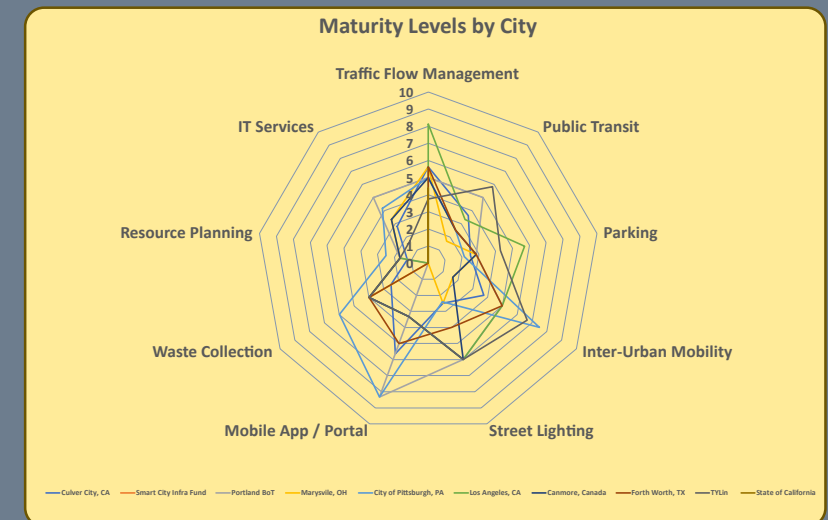
Enabling Traffic Engineering

- Eliminate the need for studies and adjustment of signal timing and schedules ← \$\$\$
- Prioritize by mode at network, corridor, intersection, approach level 😊
- Transit ← \$\$\$ 😊
- Emergency Vehicle Route Clearing and Intersection Prioritization 😊
- ADA Support: Request Boarding and Extent Crossing Time App 😊
- Para Transit and School Bus ← \$\$\$
- Event Support
- Freight Route and Waste Management
- Parking Guidance and Reservation
- School and Hospital Zones
- Dynamic Streets
- Freeway-arterial transition
- Dynamic Street Lights, Variable Message Boards
- Apple CarPlay and Android Auto integration
- Drones – Operational Management Airspace
- ITS Asset Management

TNL Livable City Framework

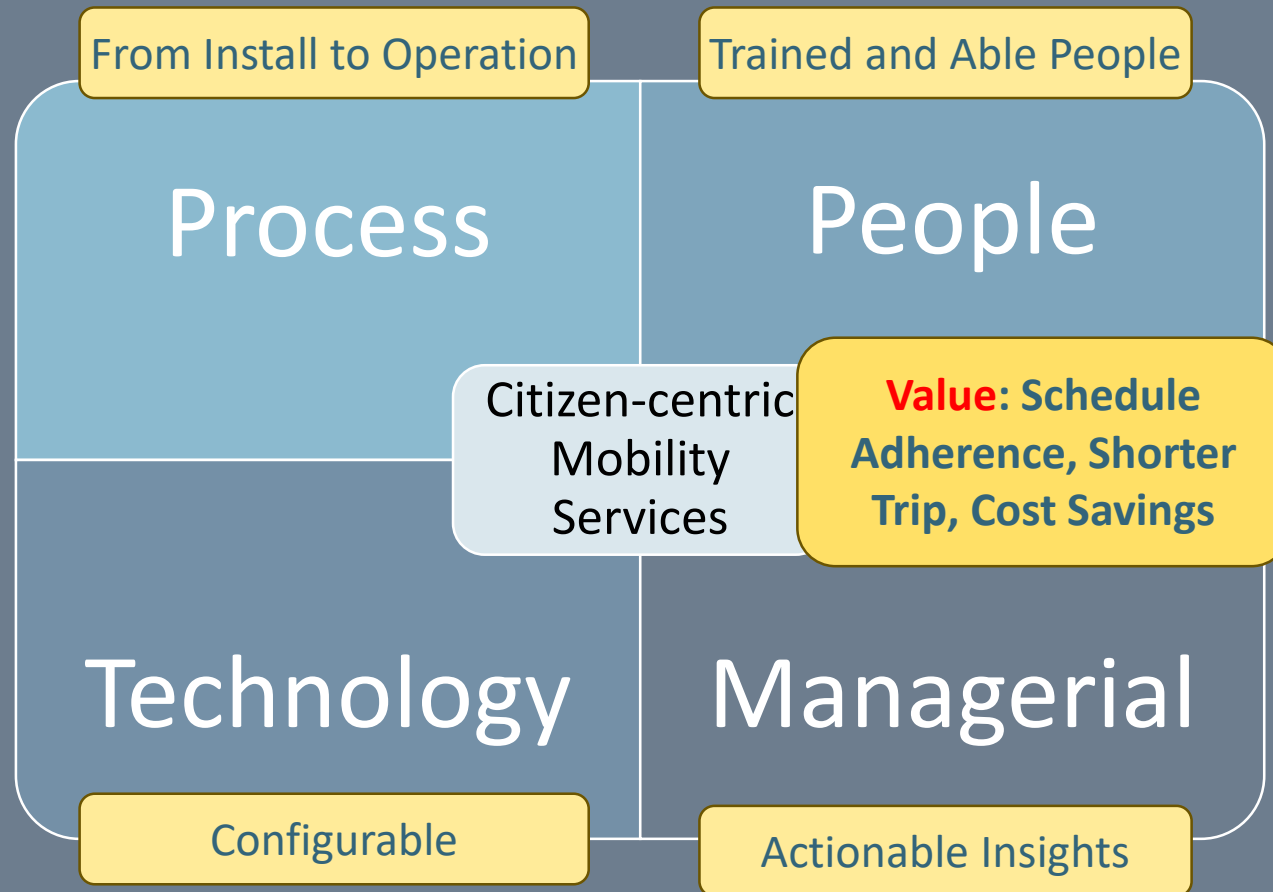


TNL Mobility Maturity Workshop Result



SFMTA Connected Corridor PoC Mission

Build a Service to improve the flow, safety, and climate for the people in the streets and in all vehicles



Design Principles

Scale

- Multi-jurisdiction
- Continuous optimization
- Leverage existing infrastructure
- Phased deployment

Transit

- Significant service level increase
- Cost reduction

Traffic Engineering

- Micro-management multi-mode and next generation Adaptive Flow Management
- Scenarios and rules
- The client owns all data

Technical Architecture

- All Connected Signal Controllers
- Open architecture
- Military-grade cyber security

Let's Race!

Simulation generated with SFMTA
PoC Connected Corridor Data
11am – 12pm



Reference Day

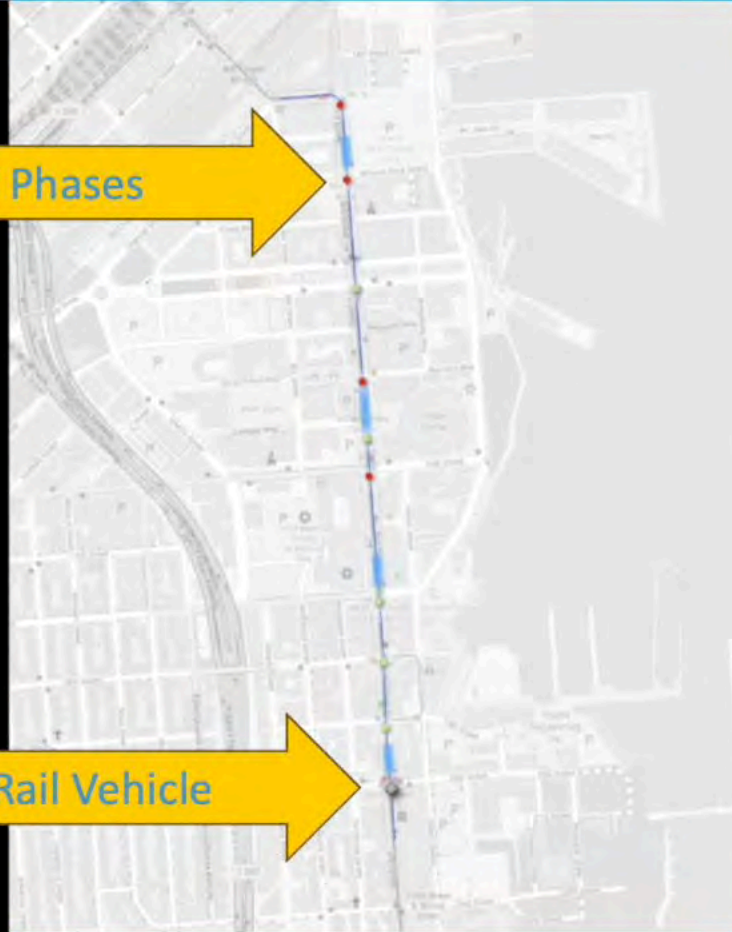
Signal Phases

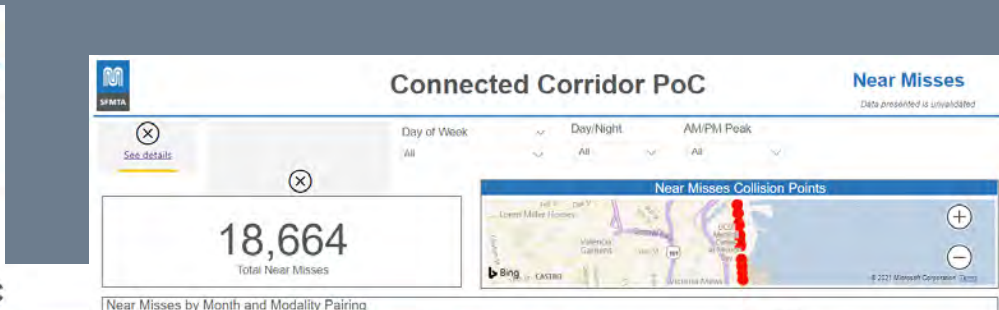
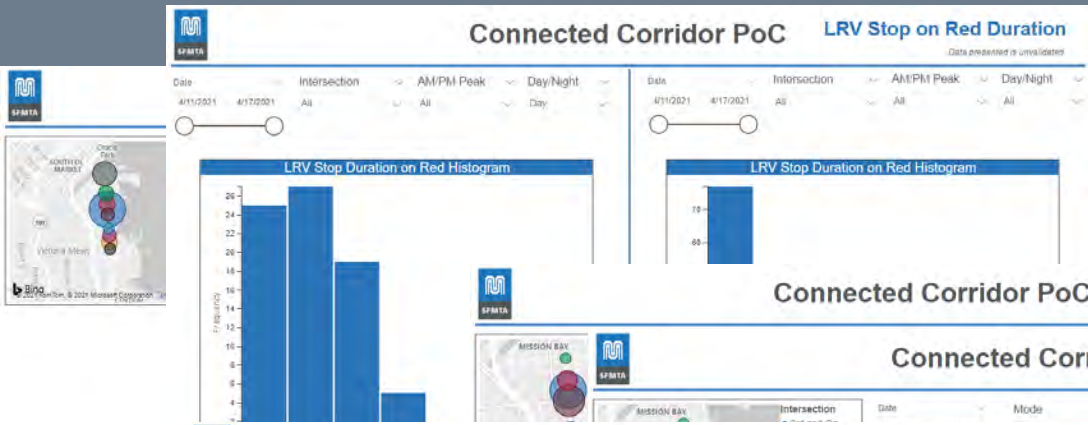
Light Rail Vehicle

Test Day TNL Technology

Same Dwelling

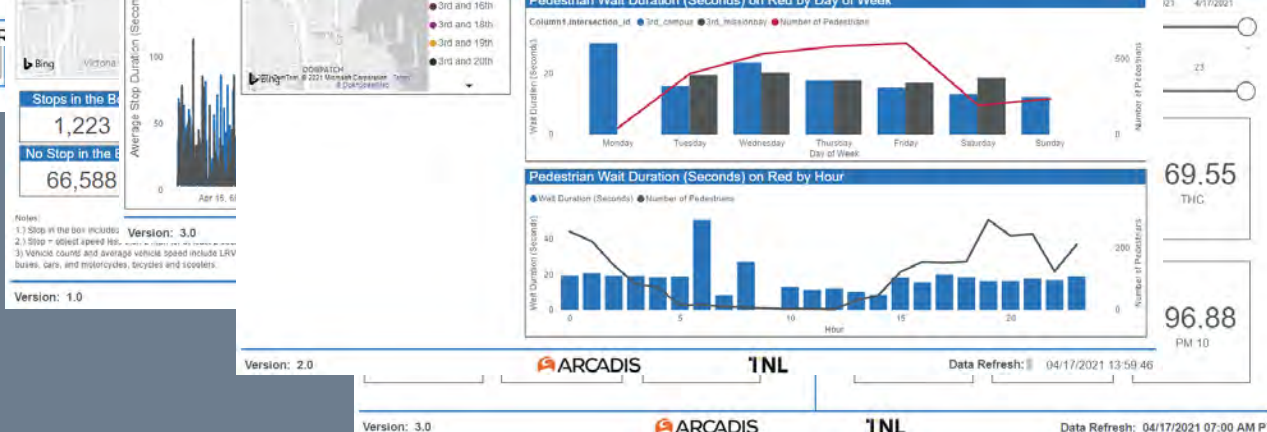
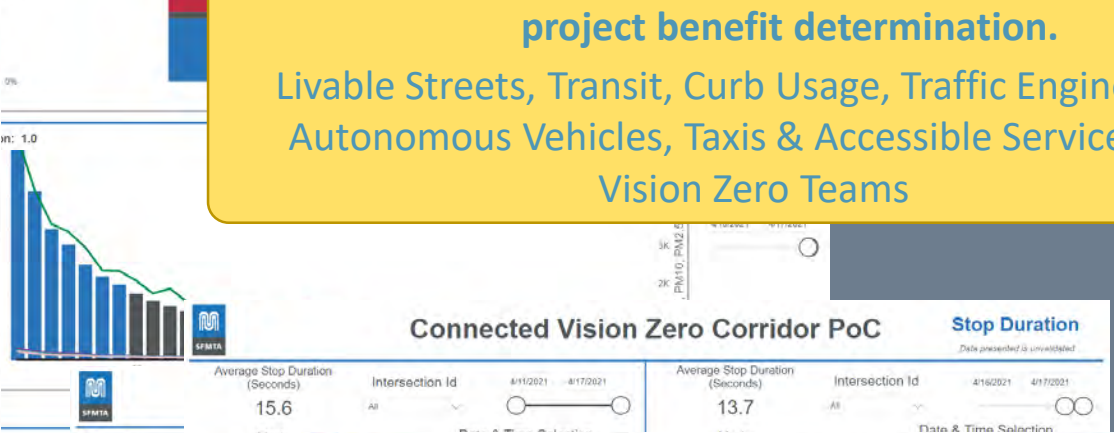
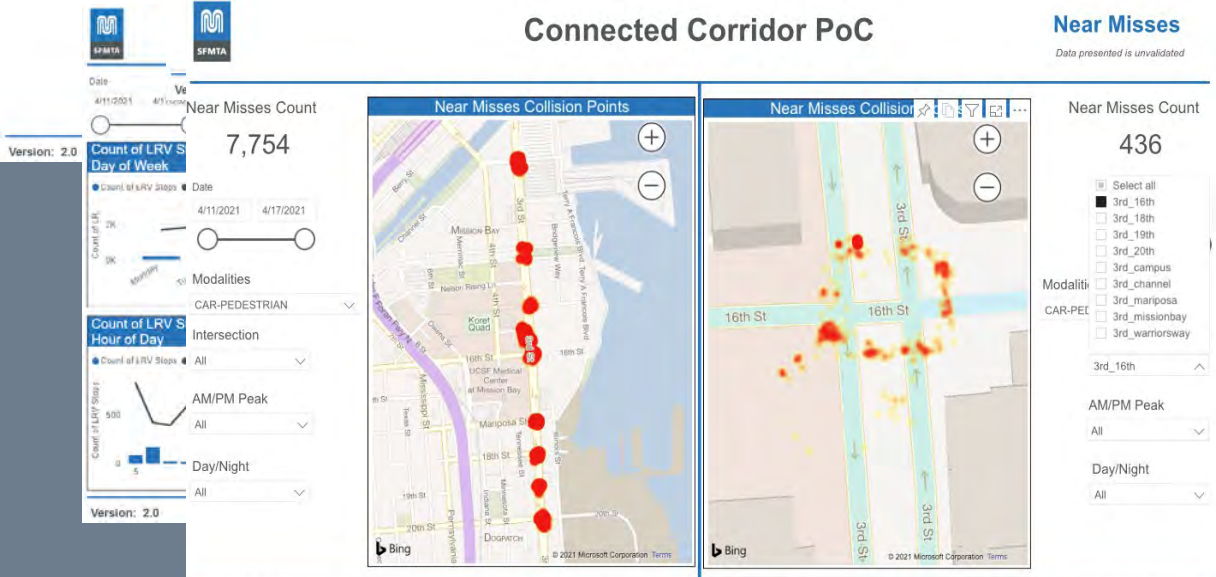
Light Rail Vehicle





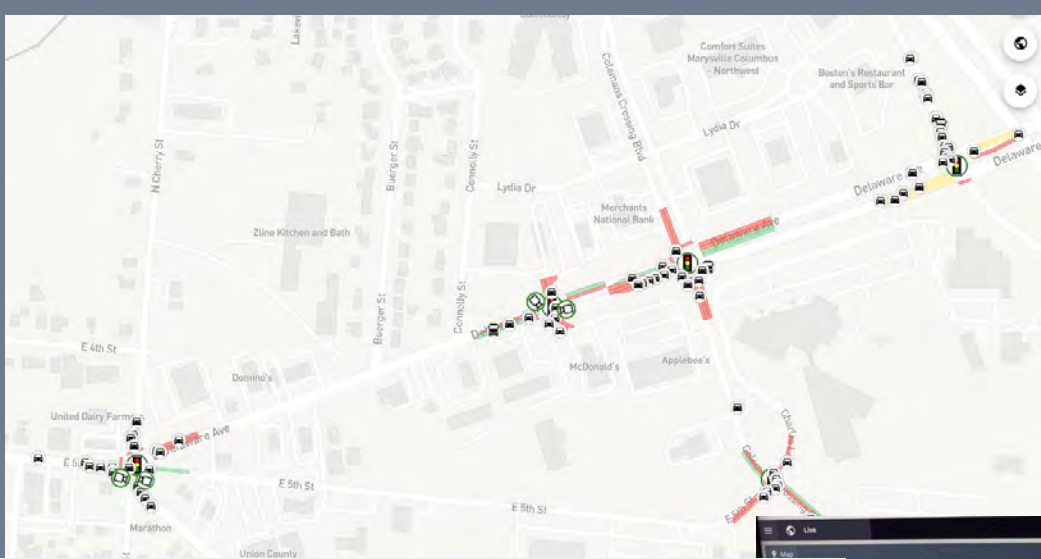
✓ Small Teams signed off the dashboards to enable actions to be identified and prioritized with after-project benefit determination.

Livable Streets, Transit, Curb Usage, Traffic Engineering, Autonomous Vehicles, Taxis & Accessible Services and Vision Zero Teams

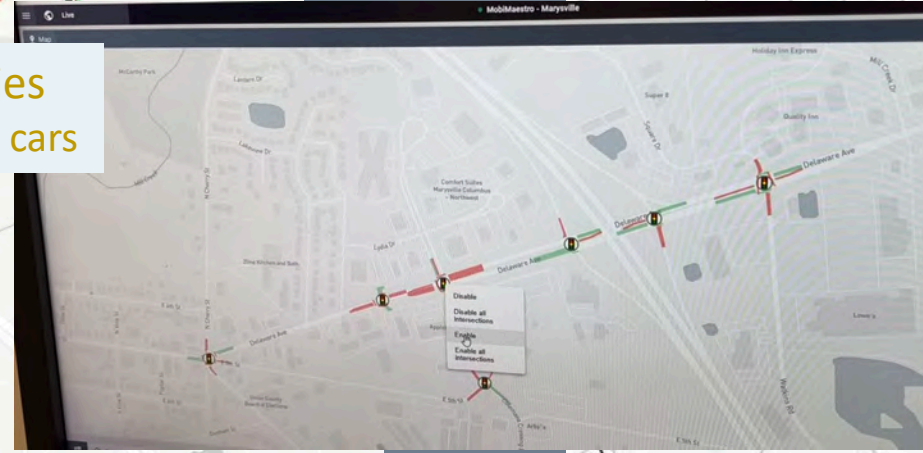
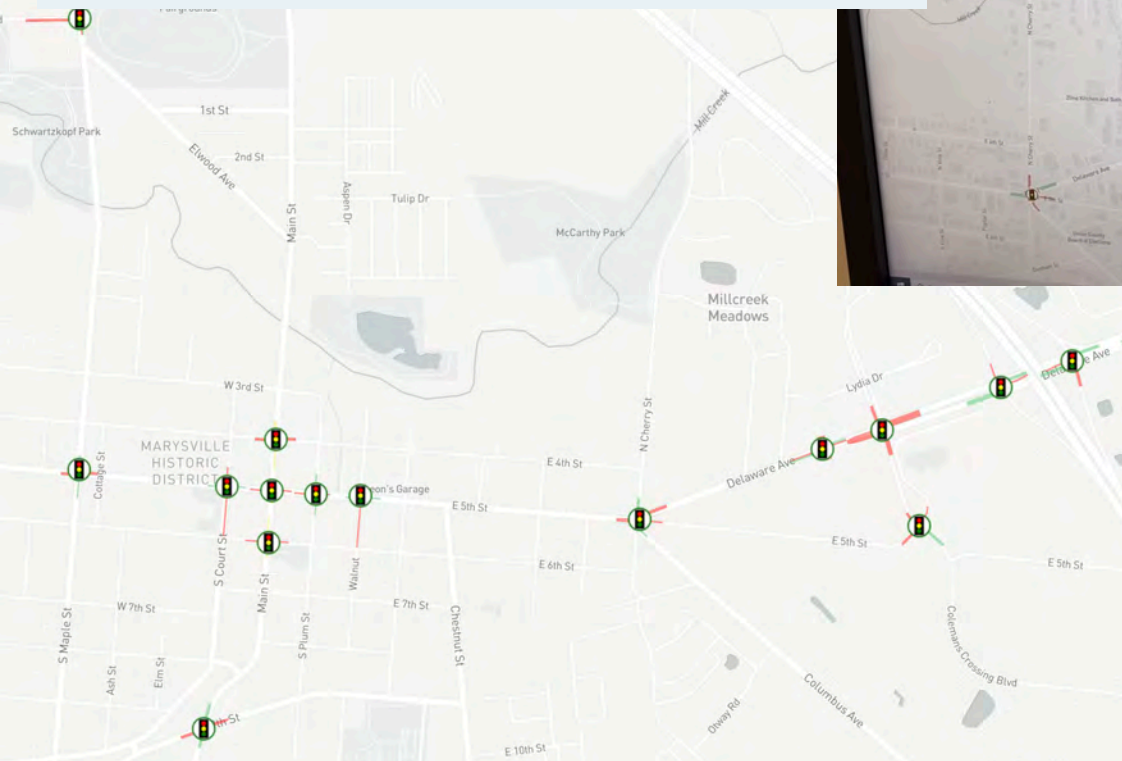
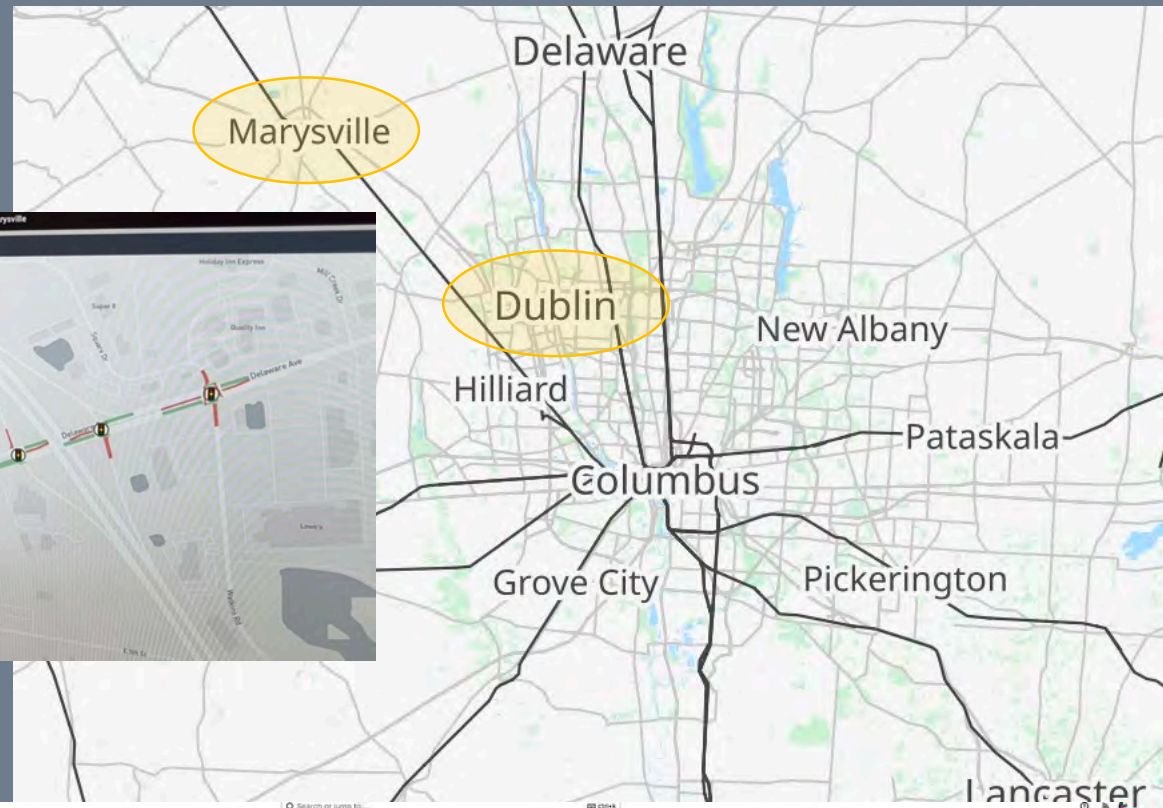


The system stores a complete digital twin – rich high-resolution data set to analyze mode, signal phase, speed, emission, safety, etc.

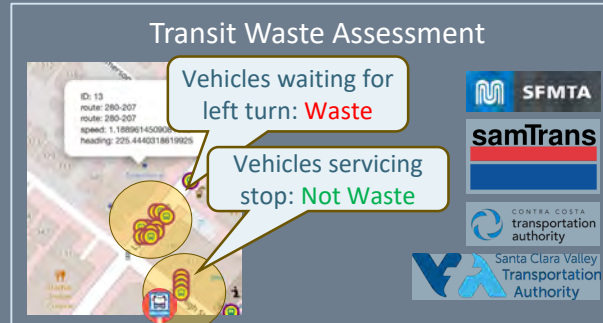
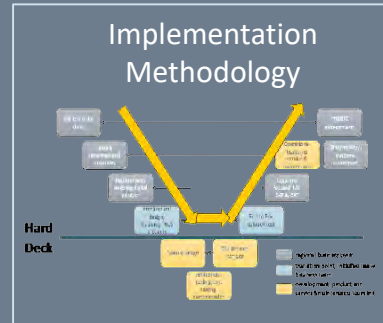
Counts, averages, durations, filters, comparisons, graphs, data downloads



NETWORK Optimization of five modalities
 Emergency, Snowplows, Trucks, Pedestrians, cars



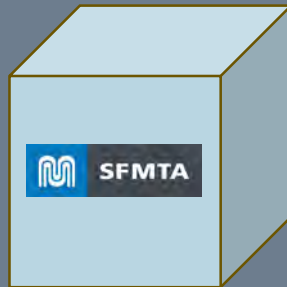
From PoC to Service – Empowering Traffic Engineering



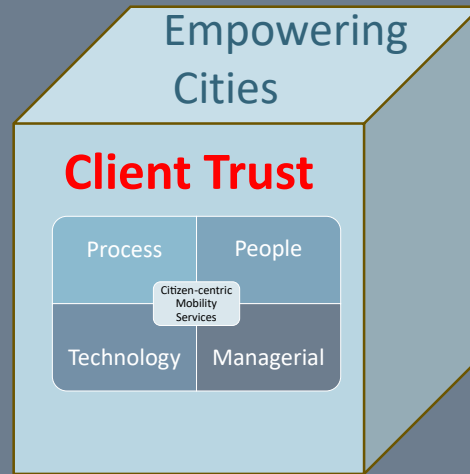
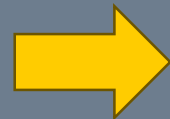
Kingdom of the Netherlands

Liveable City and Mobility Maturity Workshop

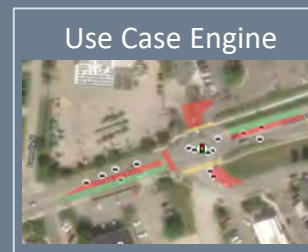
“Intersection in a Box”



Operationalize and harden the algorithms and technology



Paper ID: 1226690



TNL AI Edge Sensor FlowCubes		Cyber Security Audit Trail
24/7 Support and Maintenance		Multi-sensor object detection

Visit to The Netherlands

Endorsed by:

Participants:

Speakers:

“As we rethink transit and transportation, this trip provided not only a great overview of proven approaches but also real-world examples and conversations with practitioners. It brought a valuable perspective to the conversation in California,” Mark Tollefson, Under Secretary Transportation California State



The Hedgehog principle (vs the fox)

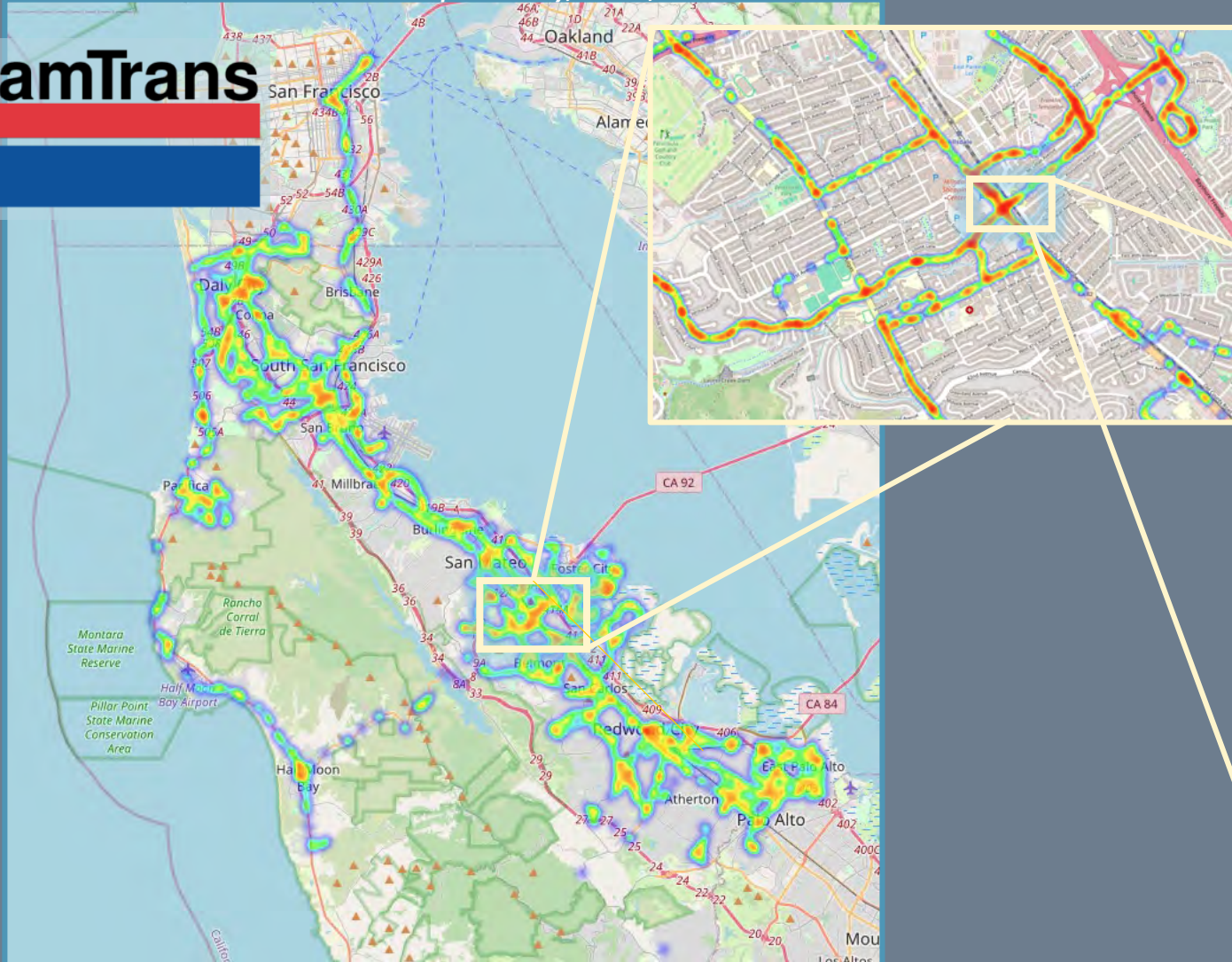
Do one thing really well



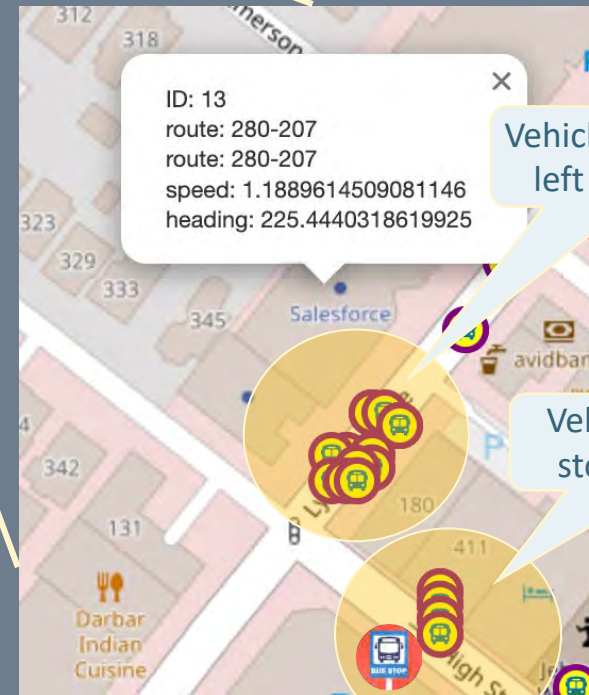
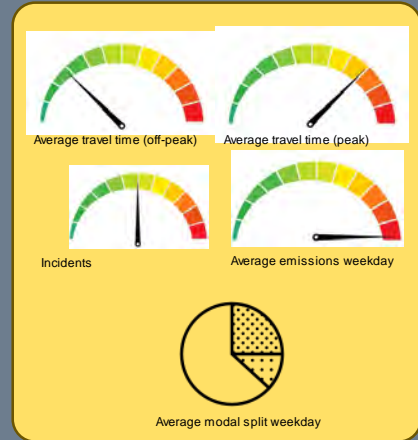
Continue till there is no Red left

Count of buses travel with speeds <15mph while not at a Transit Stop. Thursday, Feb 22, 2024

samTrans



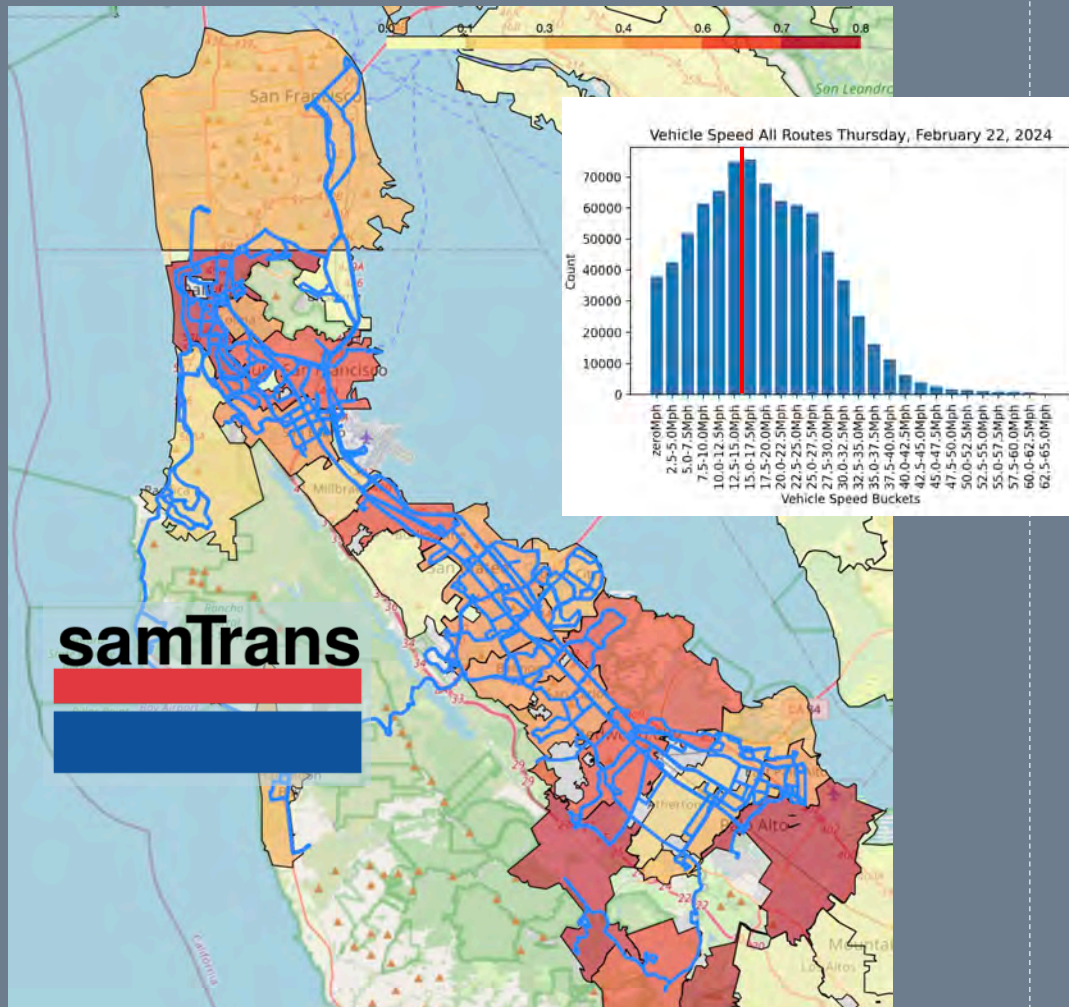
Quarterly Infrastructure Review



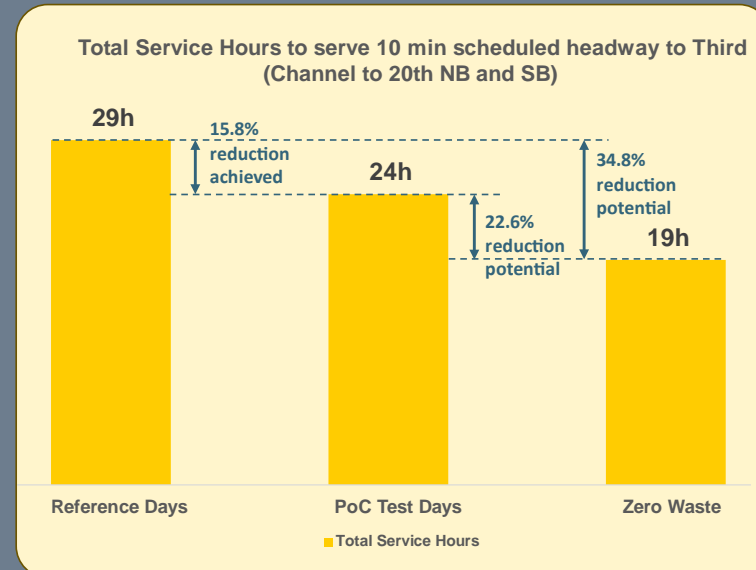
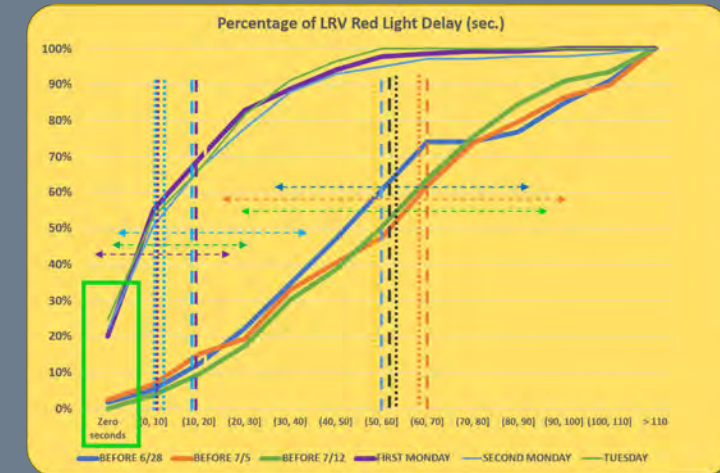
Rely on benefit to fund the next project, not external Operational Expenditure



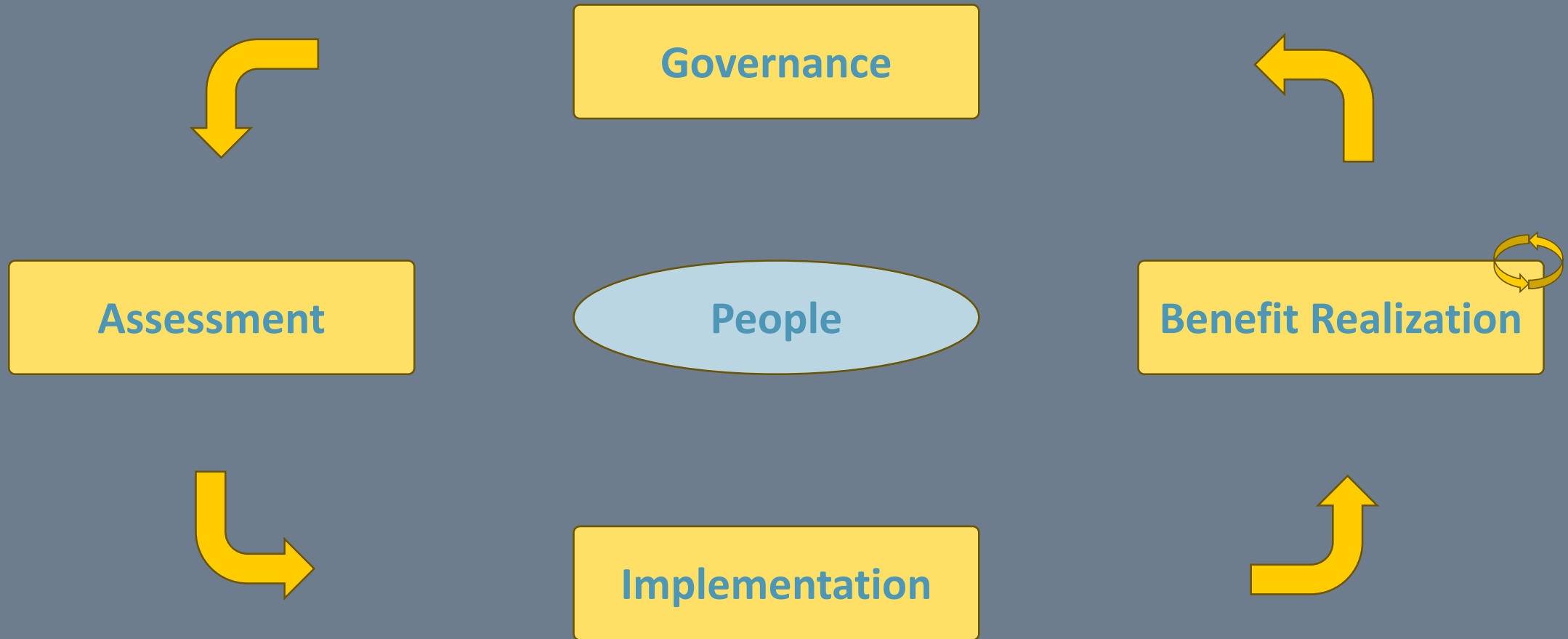
47.4% of buses travel with speeds <15mph while not at a Transit Stop. Thursday, Feb 22, 2024



- T-Line Current**
- 12-14 LRVs
 - 80 min travel
- Projected**
- 8-11 LRVs
 - 60 min travel



Service Improvement Framework





Bridging the Financials

One of the options besides Grants, etc. - PPP



Sponsors



- Institutional investment vehicle that enables cities to unlock financial and societal benefits and a rapid transition towards low-carbon, resource-efficient, and inclusive communities.
- Smart City Infrastructure Fund is backed by a leading European pension fund to invest in the scale-up of integrated Smart City infrastructure projects.

Investment size >\$10million
 Investment term 10-year minimum
 Structure Public private partnerships (PPP/P3), concessions sale & lease back
 Eligible Funding Common equity in individual assets, preferred equity, and acquisition of receivables

Contact Information

ERIN AUSTIN | COO
erin.austin@smartcityinfracfund.com
 T: +1 207 400 5662
www.smartcityinfracfund.com

Katie Collins | Operations Manager
katie.collins@smartcityinfracfund.com
 T: +1 970 294 5170
www.smartcityinfracfund.com



Physical Layer of Digital Infrastructure

Target back-bone infrastructure investments for the development of digital networks and smart city use cases in the energy, transport and water & environmental services.



Long Term Equity Investments

Underpinned by a lease arrangement or concession model with public and private entities. Project risk transfer to private sector and deconsolidation off public budget.



Global Scale Up Strategy

Partnership approach with best-in-class industry players offering scale-up support for their smart city program. Minimum investment size is as low as \$10 million, where there are expected to be future replicable opportunities.



Competitive Funding Cost and Upside Sharing

Attractive risk-adjusted returns to match the low risk profile of the infrastructure backbone. Revenue sharing on the development of future smart city use cases and services.

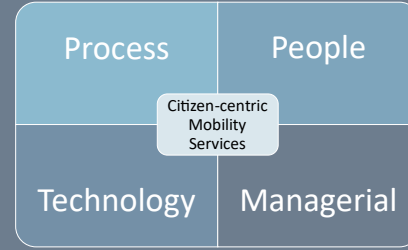
US Investment Portfolio*

City	Investment Date	Population Size	Invested Amount
Fullerton, CA	April 2019	135k	US \$72m
Salem, MA	October 2020	41k	US \$31m
Placentia, CA	April 2021	51k	US \$39m
Simi Valley, CA	October 2021	131k	US \$85m
Rancho Cordova, CA	January 2022	75k	US \$64m
Kenosha, WI	October 2023	99k	US \$98m

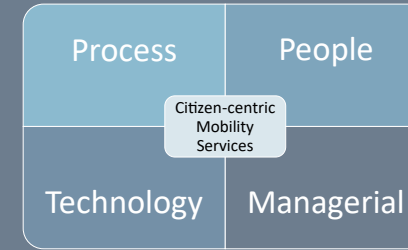
*Investments are for open access fiber network build-outs



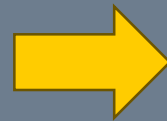
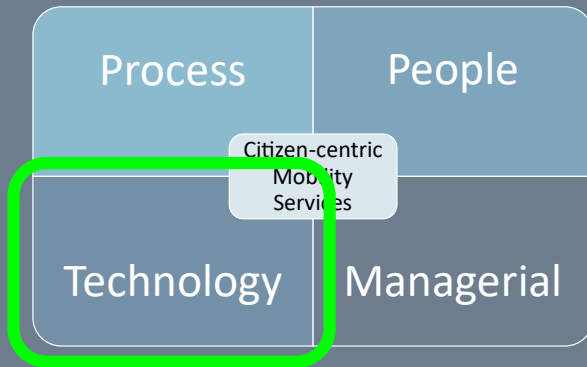
Transit Agency



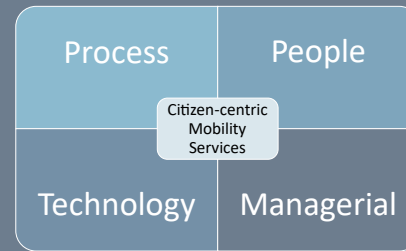
Vulnerable Road Users



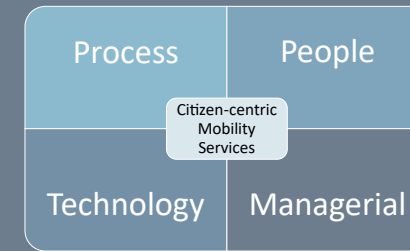
Transportation Agency



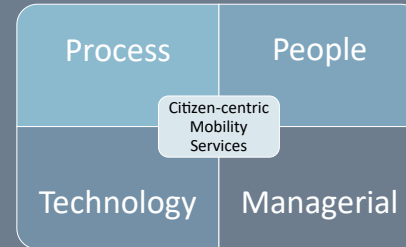
Emergency Service



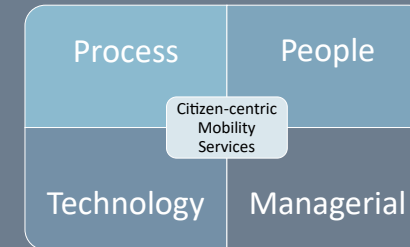
Vision Zero



Parking

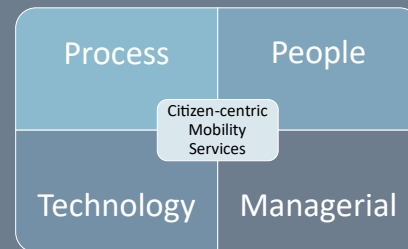


Autonomous Vehicles

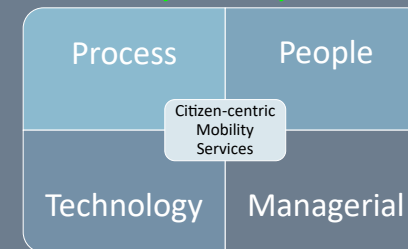


Traffic Engineering empowered to deliver world-class services

Micro-Mobility



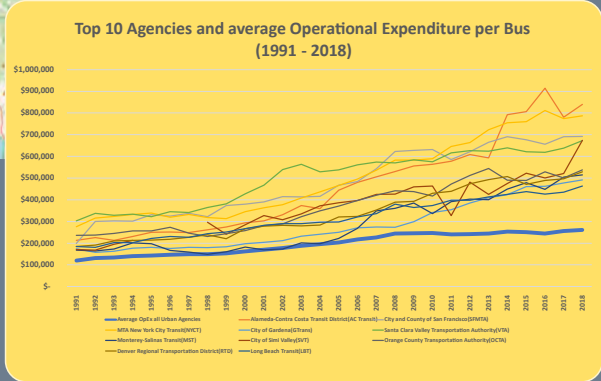
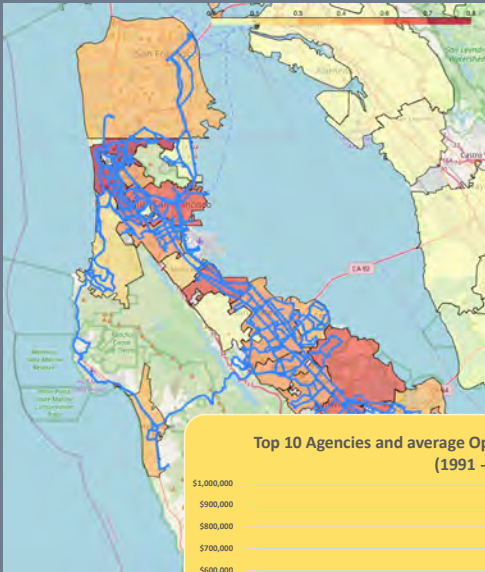
School buses, Para, Waste, etc.



For those dissatisfied...

1

Determine your opportunity
increase service levels
and reduce OpEx



2

Set your course
TNL Livable
City Framework



3

Fund

SCIF SMART CITY INFRASTRUCTURE FUND

- Institutional investment vehicle that enables cities to unlock financial and societal benefits and a rapid transition towards low-carbon, resource-efficient, and inclusive communities.
- Smart City Infrastructure Fund is backed by a leading European pension fund to invest in the scale-up of integrated Smart City infrastructure projects.

Investment size: >€10million
Investment terms: 10-year minimum
Structure: Public-private partnerships (PPPs), concessions sale & lease back
Eligible Funding: Common equity in individual assets, preferred equity, and acquisition of receivables

Contact Information
ERIN AUSTIN | COO
erin.austin@smartcityinfrastructure.com
T: +1 507 400 9462
www.smartcityinfrastructure.com

Katie Collins | Operations Manager
katie.collins@smartcityinfrastructure.com
T: +1 978 294 5170
www.smartcityinfrastructure.com

Sponsors
apg **PATRIZIA**

Physical Layer of Digital Infrastructure
Investment in digital infrastructure projects that support the digital transformation of cities and businesses.

Long Term Equity Investments
Investment in long-term infrastructure assets that provide stable returns and support the transition to a low-carbon economy.

Global Scale-Up Strategy
Investment in infrastructure projects that support the global expansion of smart city solutions.

Competitive Funding Call and Update Sharing
Investment in infrastructure projects that support the competitive funding call and update sharing process.

City	Investment Date	Population Size	Invested Amount
Fulton, CA	April 2019	325k	US\$2m
Salem, VA	October 2020	41k	US\$1m
Pasadena, CA	April 2021	51k	US\$5m
San Valley, CA	October 2021	131k	US\$8m
Panama City, Panama	January 2022	75k	US\$4m
Knoxville, TN	December 2022	59k	US\$8m

*Investments are for open access fibre network build-outs

4

Enable your Traffic Engineers



SCAN ME

Redefining **solutions**

TNL